



OAKFIELD



Seaside, Eastbourne BN22 2QW

£795 Per Calendar Month



Seaside, Eastbourne BN22 2QW

This one bedroom flat is ideally located in the sought-after Seaside area of Eastbourne with easy access into Eastbournes town centre and vibrant seafront.

The property offers a well appointed living space with double bedroom, open plan living and kitchen with bath and shower.

Perfectly positioned for easy access to local shops, cafes, and the beautiful seafront, this flat offers a wonderful blend of convenience and coastal living. Whether you're enjoying the nearby beach or exploring the town, everything you need is within easy reach.

Please note:
An annual household income of £23,850 is required to pass affordability requirements.
The tenancy will begin with a 12 month initial term





Living Room
13'5" x 10'5" (4.10m x 3.20m)

Kitchen
10'8"3" x 10'9" (3.30m x 3.30m)

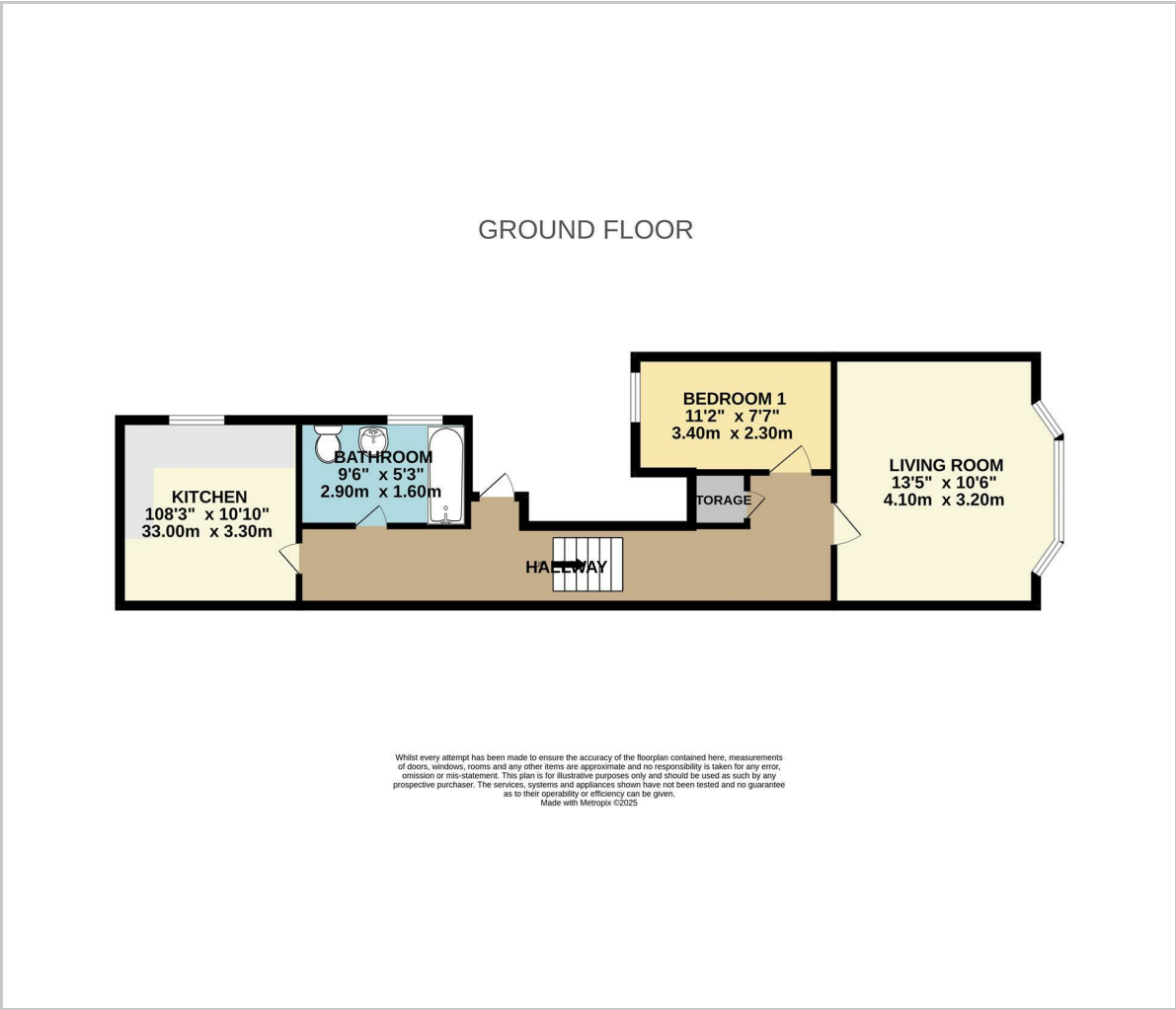
Bedroom 1
11'1" x 7'6" (3.40m x 2.30m)

Bathroom
9'6" x 5'2" (2.90m x 1.60m)

Council Tax Band A - £1,688.32 Per Annum



Floor Plan

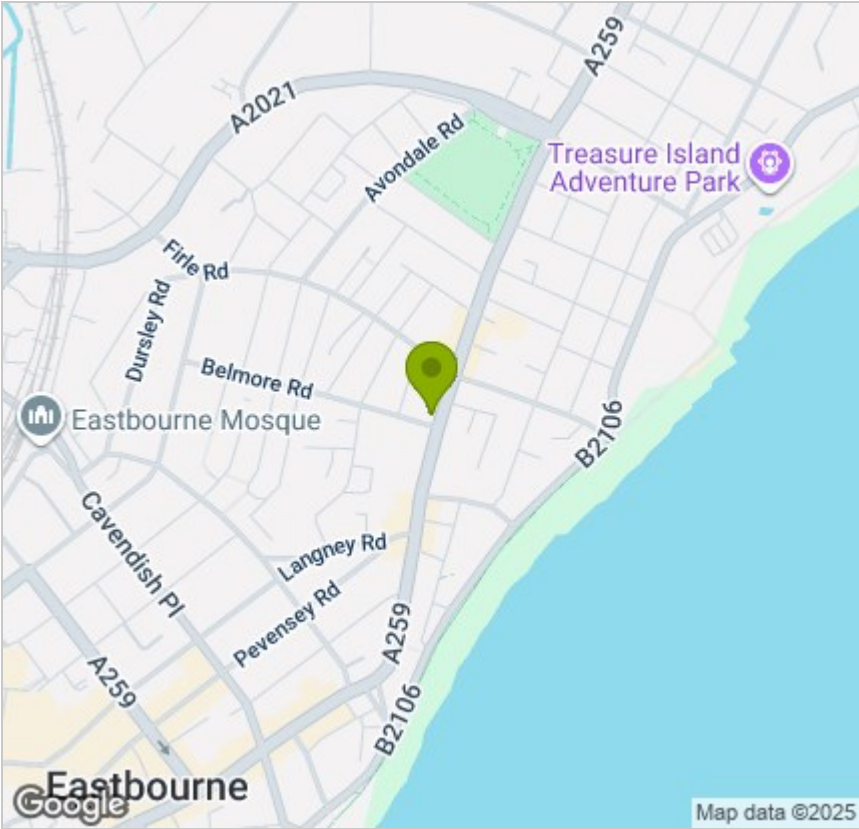


Viewing

Please contact us on 01323 405553
if you wish to arrange a viewing appointment for this property or require further information.

These particulars, whilst believed to be accurate are set out as a general outline only for guidance and do not constitute any part of an offer or contract. Intending purchasers should not rely on them as statements of representation of fact, but must satisfy themselves by inspection or otherwise as to their accuracy. No person in this firms employment has the authority to make or give any representation or warranty in respect of the property.

Area Map



Energy Efficiency Graph

